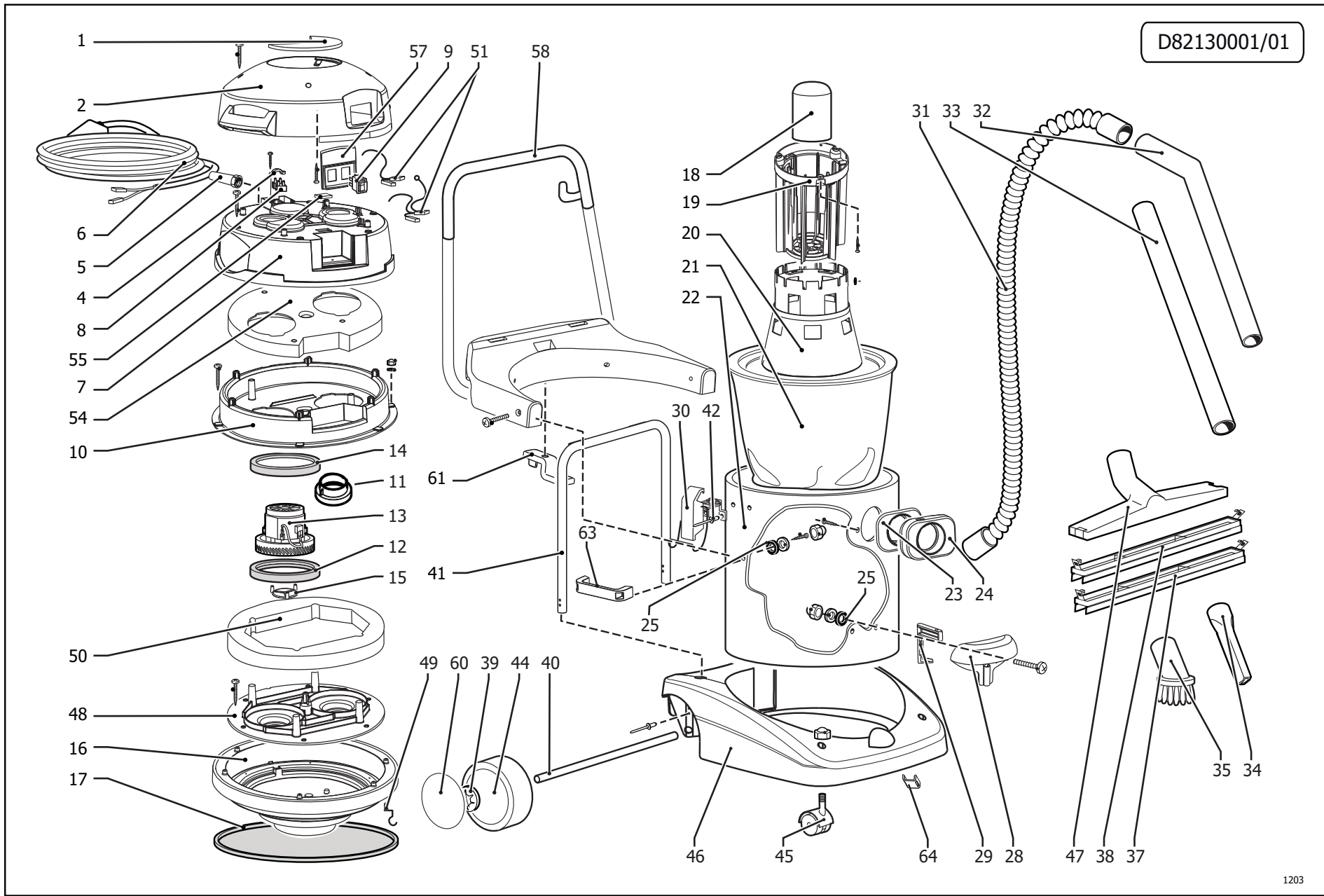


D82130001/01



1203

Pos.	Code	Substituted by	Q.ty	Purchasable	Min. Q.ty	For mainten.	Description
0	R52090080		1	No			ASS. MANICO+SUPP.MANICO GR.SCURO RAL.7016 (PANT.425C)+LEVA(X F.INOX)
001	4.208.0283		1	Yes	1		GREY HANDLE FOR VACUUM CLEANER '03 RAL.7016
002	4.208.0288		1	Yes	1		GREY HEAD DOMUS-TAURUS '03 RAL.7016
004	4.008.0277		1	Yes	1		CABLE HOOK
005	3.406.0031		1	Yes	1		CABLE HOLDER 60X12X15.5 EPDM BLACK
006	4.012.0179		1	Yes	1		CABLE H05VV-F 2X1.5 MT.10 SCHUKO PLUG W/TERMINALS TIP BRASS
007	4.208.0400		1	Yes	1		UNDER COVER 2 MOTOR
008	3.405.0055		1	Yes	1		JUNCTION-BOX 4MMQ. 110 12 380V
009	5.009.0213		2	Yes	1	EXT	SWITCH WITH PROTECTION 12(10)
010	4.208.0086		1	Yes	1		UPPER SPACER VACUUM CLEANER PROF.'03-2 MOTORS
011	4.208.0338		2	Yes	1		ADAPTER FOR MOTOR CONVEYOR DOMUS/TAURUS
012	3.299.0015		2	Yes	1		MOTOR GASKET
013	3.755.0069		2	Yes	1	EXT	UNIVERSAL MOTOR 220-240V 50/60Hz 1200W
014	4.215.0093		2	No			MOTOR GASKET EPDM TH.5
015	4.208.0095		2	Yes	1		VALVE DOMUS TAURUS
016	4.208.0293		1	Yes	1		GREY MOTOR BASE FOR PROF.VACUUM CLEANER'03 RAL.7016
017	4.215.0013	6.205.0070	1	Yes	1		GASKET 410X445 EPDM 45 SH
018	4.208.0096		1	Yes	1	EXT	FLOATING
019	4.208.0075		1	Yes	1		BASKET FOR PROFESSIONAL VACUUM CLEANER
020	4.208.0076		1	Yes	1		CONE
021	5.509.0039		1	Yes	1		FILTER
022	3.751.0012		1	Yes	1		INOX BODY DOMUS/TAURUS 430BA SP0.7 D.420XH585
023	3.099.0455		1	Yes	1		GASKET
024	3.752.0075		1	Yes	1		COMPLETE HOSE CONNECTION D.40
025	4.215.0018		2	Yes	1		RUBBER WASHER 26X5X2
028	4.208.0098		1	Yes	1		FRONT HANDLE FOR BODY DOMUS TAURUS
029	4.208.0099		1	Yes	1		LEVER
030	3.099.0454		2	Yes	1	EXT	HOOK 2.05/621 ZNT FOR BODY
031	5.209.0021		1	Yes	1	EXT	COMPLETE FLEXIBLE HOSE MT. 2.5 D.40
032	3.753.0109		1	Yes	1		CURVED EXTENSION D.40MM
033	3.753.0110		1	Yes	1		EXTENSION D.40MM

DOMINO 78 INOX BS WET&DRY 220-240/50-60 EU FASA - Content filters: validity 21/05/2021



R82130502 - DOMINO 78 INOX BS WET&DRY 220-240/50-60 EU FASA

Validity: from 09/12/2004 to 31/12/9999

21/05/2021

Page 2 / 3

Pos.	Code	Substituted by	Q.ty	Purchasable	Min. Q.ty	For mainten.	Description
034	3.754.0048		1	Yes	1		FLAT LANCE D.40
035	3.754.0049		1	Yes	1		ROUND BRUSH D.40
037	3.754.0084		1	Yes	1		BRISTLES FLOOR BRUSH
038	3.754.0085		1	Yes	1		LIQUID FLOOR BRUSH
039	3.099.0019		2	Yes	1		BLOCK WHEEL D.250x55 D.20
040	4.207.0004		1	Yes	1		AXLE FOR VACUUM CLEANER TAURUS DOMUS D.20 L.500
041	4.207.0002		1	Yes	1		INFERIOR TUBULAR
042	3.099.0453		2	Yes	1		ALLUM.PIN
044	3.006.0049		2	Yes	1		WHEEL DIAM. 250X55 HOLE 20 (L.WASH)
045	3.006.0045		2	Yes	1		PIVOTTING WHEEL D.75X24 M10X30 FOR DOMUS AND TAURUS
046	4.208.0294		1	Yes	1		GREY BASE FOR TROLLEY DOMUS-TAURUS RAL.7016
047	3.754.0083		1	Yes	1		BRUSH HOLDER D.37 L=400 MM
048	4.208.0087		1	Yes	1		LOWER SPACER VACUUM CLEANER PROF.'03-2 MOTORS
049	5.213.0001		1	Yes	1		ANTISTATIC PLATE
050	4.215.0126		1	Yes	1		SPONGE mm80x25x1250 PPI 60 -AU-
051	4.212.0001		1	Yes	1		WIRING SEZ.1,5 FOR VACUUM CLEANER PROF.
054	4.215.0097		1	Yes	1		SPONGE HLC 24 AU SP.60 D.340mm
055	4.215.0079		1	No			SPONGE PL/45 61x27x3sp
057	4.208.0069		1	Yes	1		SWITCH HOLDER '03 BLACK
058	5.209.0080		1	Yes	1		ASSEMBLY HANDLE+SUPPORT+LEVER
060	3.099.0841		2	Yes	1		COVER FOR WHEEL D.250x55 (DARK GREY RAL.7016) (PANT.425C)
061	4.208.0093		1	Yes	1		HANDLE LOCKING LEVER -R- RAL-3020